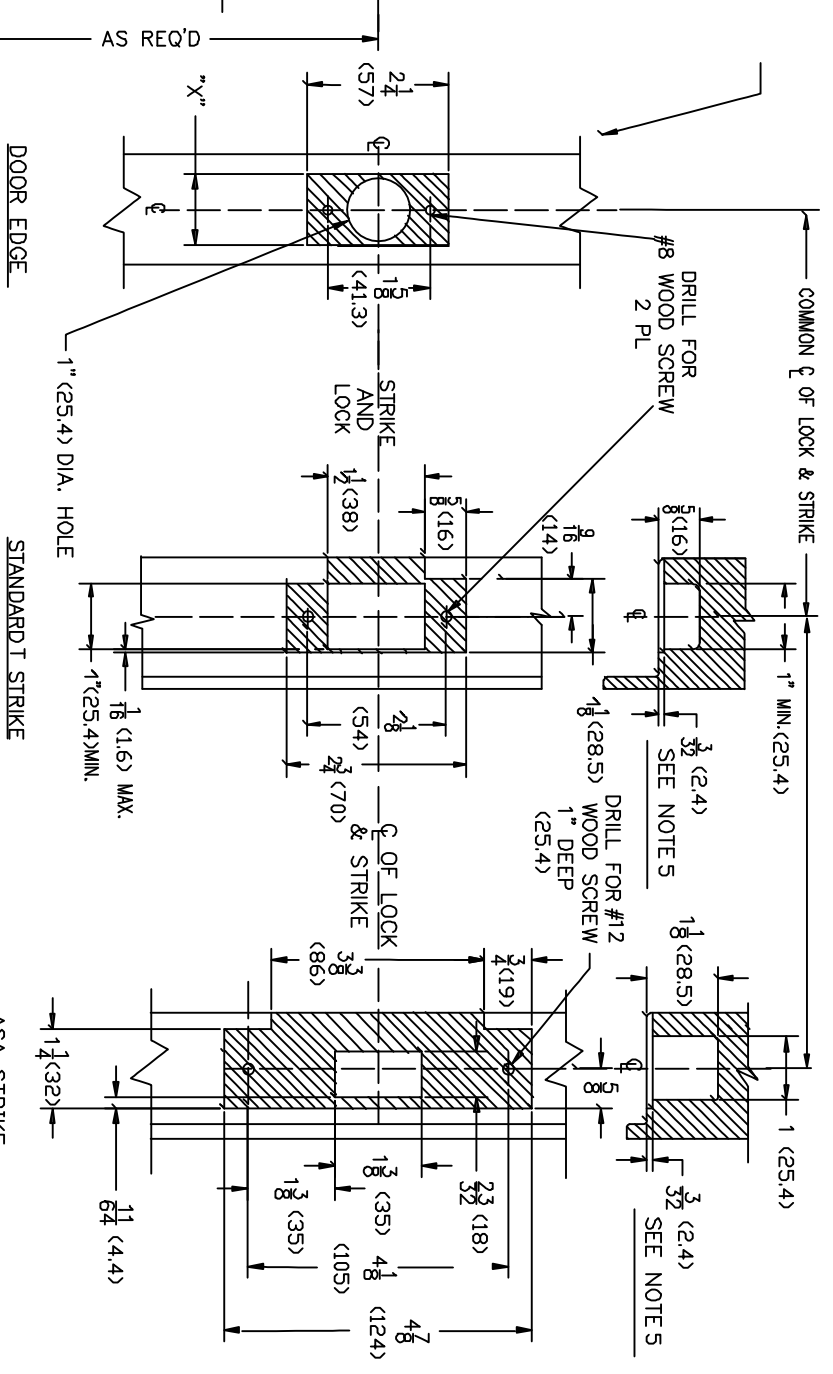


BACKSET	"X"
2 3/8" (60)	1" (25.4)
2 3/4" (70)	1 1/8" (28.5)



- NOTES:**
- 1) DO NOT SCALE DRAWING
 - 2) SEE DETAIL "A" BEFORE MACHINING
 - 3) DETERMINE BACKSET BEFORE MACHINING
 - 4) VERIFY FACE PLATE DIMENSION "X"
 - 5) WHEN USING BACK BOX ADD DIMENSION



Brookline Industries
1624 South Clinton Street
Chicago, IL 60616 USA
<http://brooklineind.com>

DIMENSIONS ARE INCHES () ARE IN MILLIMETERS.

A252 GRADE 1 DOUBLE CYLINDER DEADLATCH FOR WOOD DOORS

TEMPLATE NUMBER: **T-A252W** Rev1

DATE: 01-01-2006